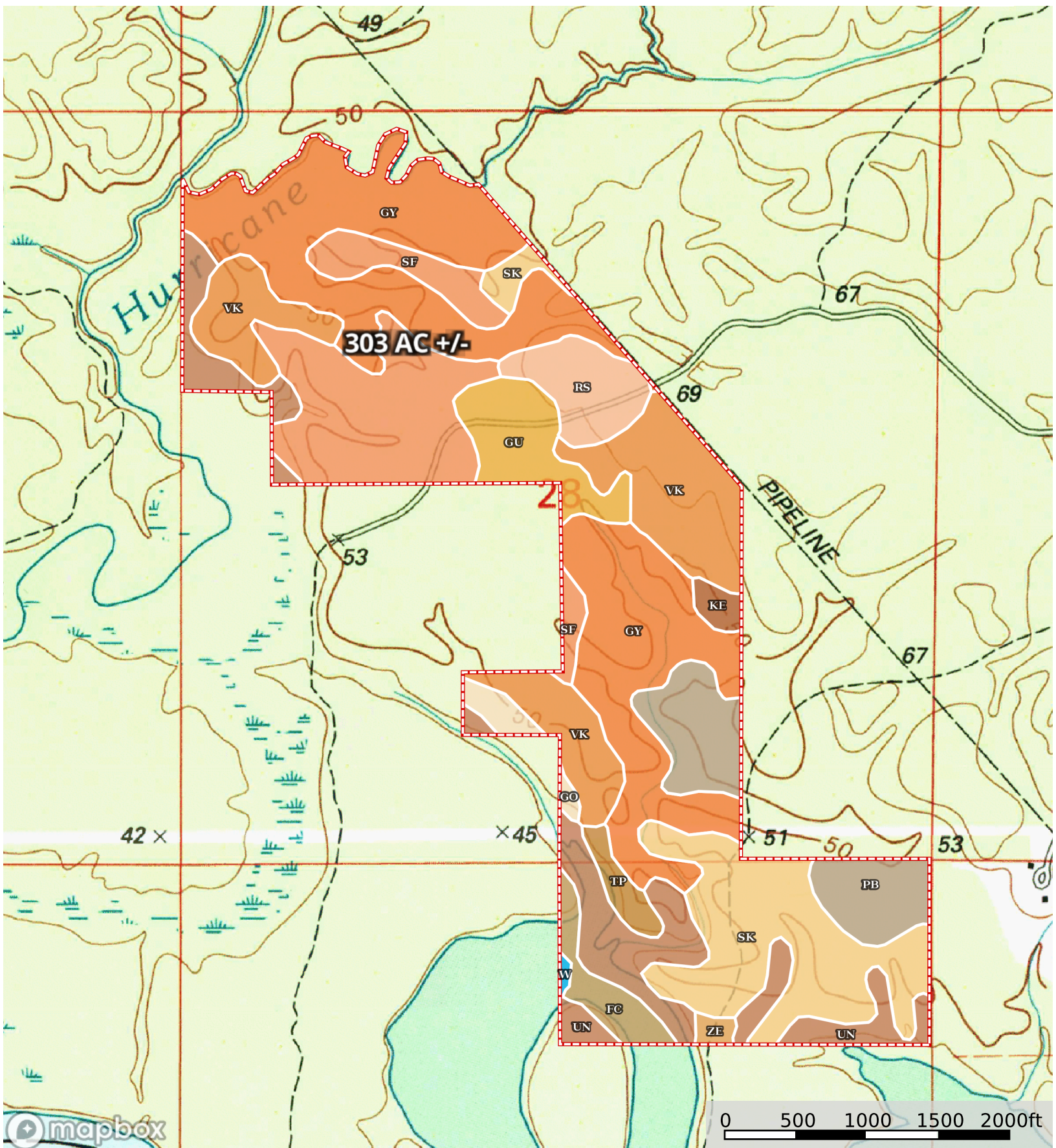


# Fool River Road Timber and Hunting Tract, LaSalle Parish, Louisiana, 303 AC +/-



 Boundary

|  Boundary 303.33 ac

SOIL CODE	SOIL DESCRIPTION	ACRES	%	CPI	NCCPI	CAP
GY	Guyton and Ouachita soils, frequently flooded	88.51	29.18	0	40	5w
Vk	Vick silt loam, 0 to 2 percent slopes	40.74	13.43	0	74	2w
Sf	Savannah fine sandy loam, 1 to 5 percent slopes	40.72	13.42	0	41	2e
Sk	Shatta very fine sandy loam, 1 to 5 percent slopes	38.15	12.58	0	61	3e
Un	Una silty clay loam, frequently flooded	31.97	10.54	0	50	4w
Pb	Pheba loam	21.03	6.93	0	42	3w
Gu	Guyton silt loam, 0 to 1 percent slopes, rarely flooded	13.7	4.52	0	68	3w
Rs	Ruston fine sandy loam, 1 to 3 percent slopes	11.07	3.65	0	72	2e
Fc	Fausse clay, frequently flooded	6.51	2.15	0	5	7w
Tp	Tippah silt loam, 1 to 5 percent slopes	3.73	1.23	0	83	2e
Go	Gore silt loam, 5 to 15 percent slopes	3.36	1.11	0	50	6e
Ke	Keithville very fine sandy loam, 1 to 5 percent slopes	2.16	0.71	0	74	3e
Ze	Zenoria clay loam, occasionally flooded	1.26	0.42	0	61	4w
W	Water	0.42	0.14	0	-	-
TOTALS		303.34(*)	100%	-	51.13	3.5









(\*) Total acres may differ in the second decimal compared to the sum of each acreage soil. This is due to a round error because we only show the acres of each soil with two decimal.

## Capability Legend

Increased Limitations and Hazards

Decreased Adaptability and Freedom of Choice Users

Land, Capability

								
	1	2	3	4	5	6	7	8
'Wild Life'	•	•	•	•	•	•	•	•
Forestry	•	•	•	•	•	•	•	
Limited	•	•	•	•	•	•	•	
Moderate	•	•	•	•	•	•		
Intense	•	•	•	•	•			
Limited	•	•	•	•				
Moderate	•	•	•					
Intense	•	•						
Very Intense	•							

### Grazing Cultivation

(c) climatic limitations (e) susceptibility to erosion

(s) soil limitations within the rooting zone (w) excess of water