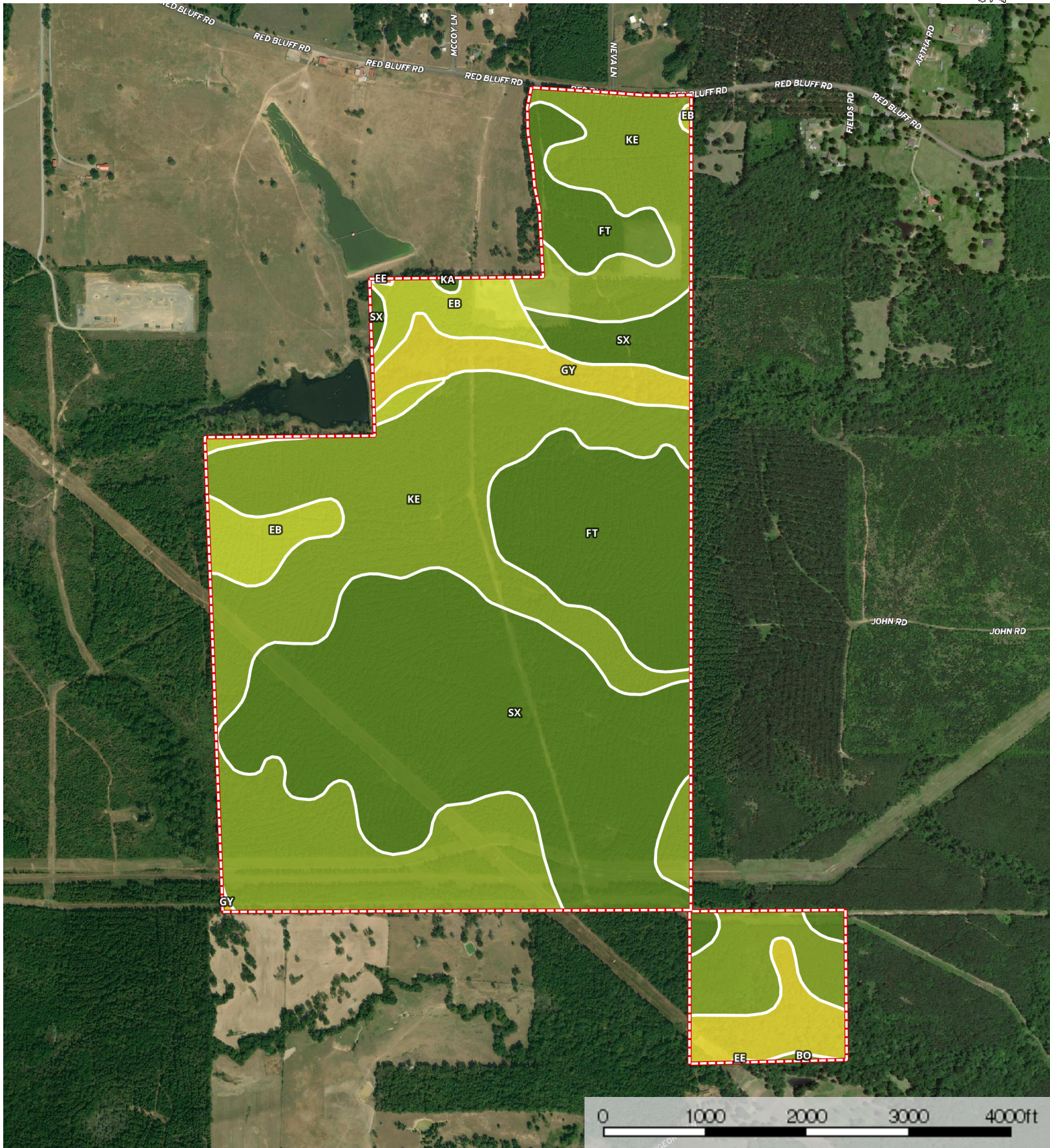



Red Bluff Road Tract

De Soto Parish, Louisiana, 525 AC +/-



 Boundary

|  Boundary 526.2 ac

SOIL CODE	SOIL DESCRIPTION	ACRES	%	CAP
GY	Guyton-lulus complex, 0 to 1 percent slopes, frequently flooded	34.1	6.48	5w
Ft	Frierson fine sandy loam, 1 to 3 percent slopes	70.1	13.32	2e
Sx	Scottsville-Latex complex, 0 to 2 percent slopes	166.3	31.59	2w
Eb	Eastwood very fine sandy loam, 1 to 5 percent slopes	28.3	5.38	4e
Ee	Eastwood very fine sandy loam, 5 to 20 percent slopes	0.2	0.04	6e
Bo	Bowie fine sandy loam, 1 to 5 percent slopes	0.6	0.11	3e
Ke	Keithville very fine sandy loam, 1 to 5 percent slopes	226.1	42.97	3e
Ka	Keatchie fine sandy loam, 1 to 3 percent slopes	0.5	0.1	2e
TOTALS		526.2	100%	2.73

Capability Legend

Increased Limitations and Hazards
Decreased Adaptability and Freedom of Choice Users

Land, Capability

	1	2	3	4	5	6	7	8
'Wild Life'	•	•	•	•	•	•	•	•
Forestry	•	•	•	•	•	•	•	
Limited	•	•	•	•	•	•	•	
Moderate	•	•	•	•	•	•		
Intense	•	•	•	•	•			
Limited	•	•	•	•				
Moderate	•	•	•					
Intense	•	•						
Very Intense	•							

Grazing Cultivation

(c) climatic limitations (e) susceptibility to erosion
(s) soil limitations within the rooting zone (w) excess of water