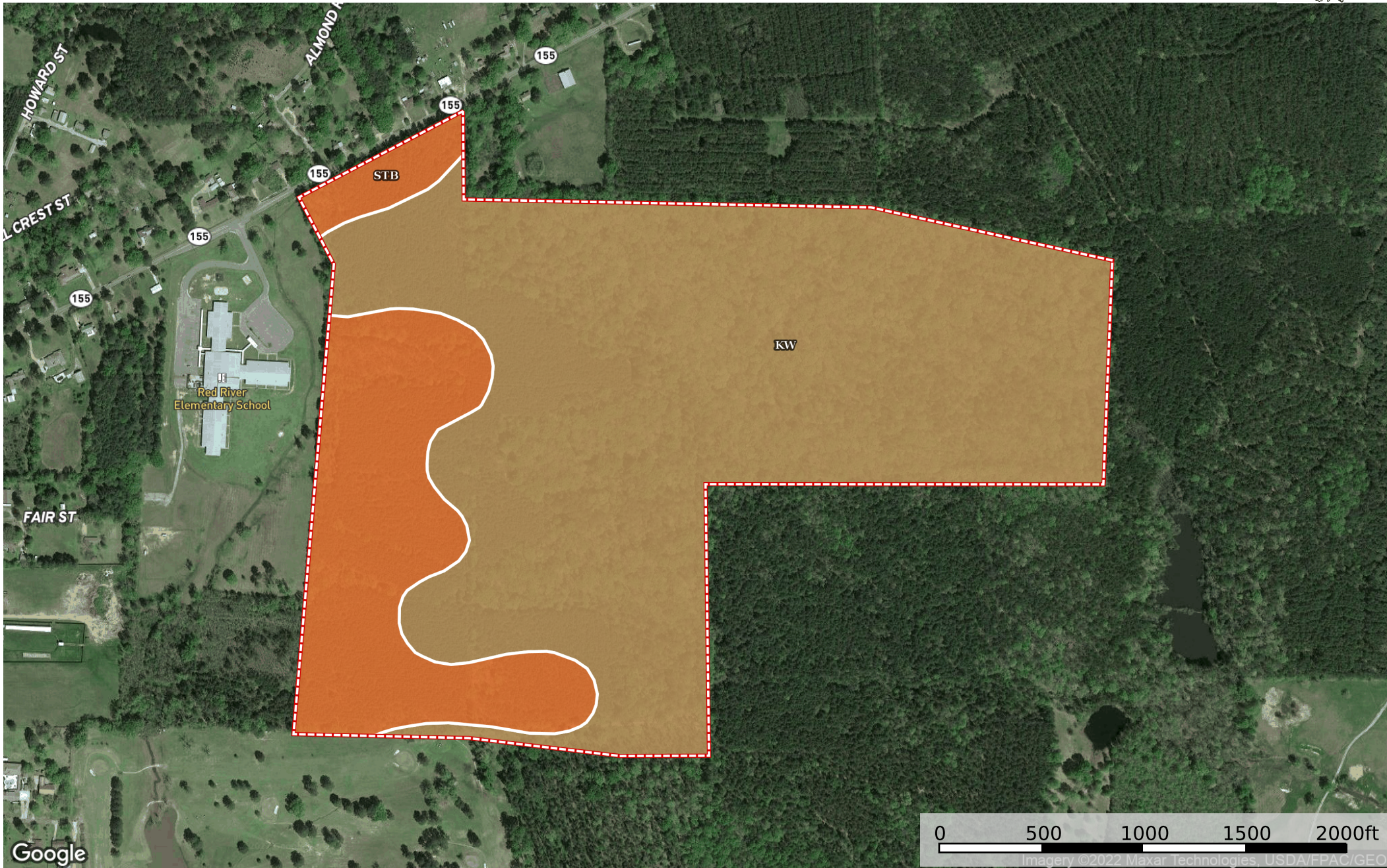
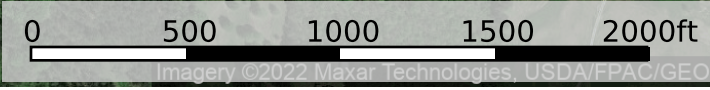


LA 155 Tract

Red River Parish, Louisiana, 179 AC +/-



Google



Boundary

|  Boundary 179.8 ac

| SOIL CODE | SOIL DESCRIPTION | ACRES | % | CPI | NCCPI | CAP |
|-----------|------------------------------------|--------------|-------|-----|-------|------|
| KW | Kolin-Wrightsville association | 138.2 3 | 76.88 | 0 | 69 | 2e |
| STB | Shatta association, gently sloping | 41.57 | 23.12 | 0 | 69 | 3e |
| TOTALS | | 179.8(*) | 100% | - | 69.0 | 2.23 |

(*) Total acres may differ in the second decimal compared to the sum of each acreage soil. This is due to a round error because we only show the acres of each soil with two decimal.

