

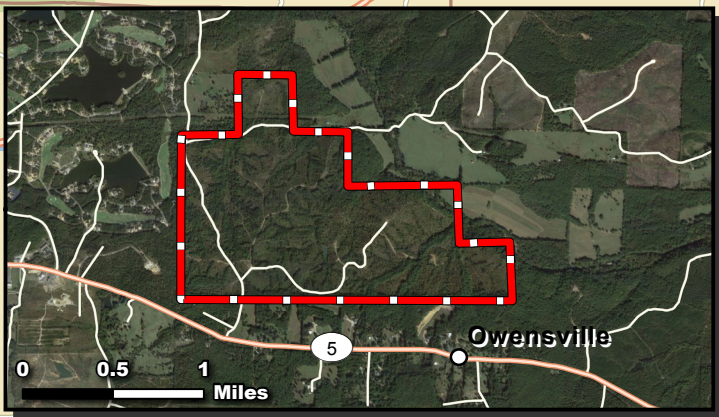
MIDDLE FORK OF THE SALINE RIVER - 602.17 AC +/- SALINE COUNTY, AR (VICINITY OVERVIEW)

mossyokpropertiesla.com



Date: 12.15.15
Data Source: ESRI

- Location
- Property Boundary



Dennis Dunn
1945 E 70th Street, Suite A Shreveport, LA 71105

P: (501) 701-8348

ddunn@mossyokproperties.com

The information contained herein was obtained from sources deemed to be reliable. Mapright Services makes no warranties or guarantees as to the completeness or accuracy thereof. 844.932.6277 www.mapright.com