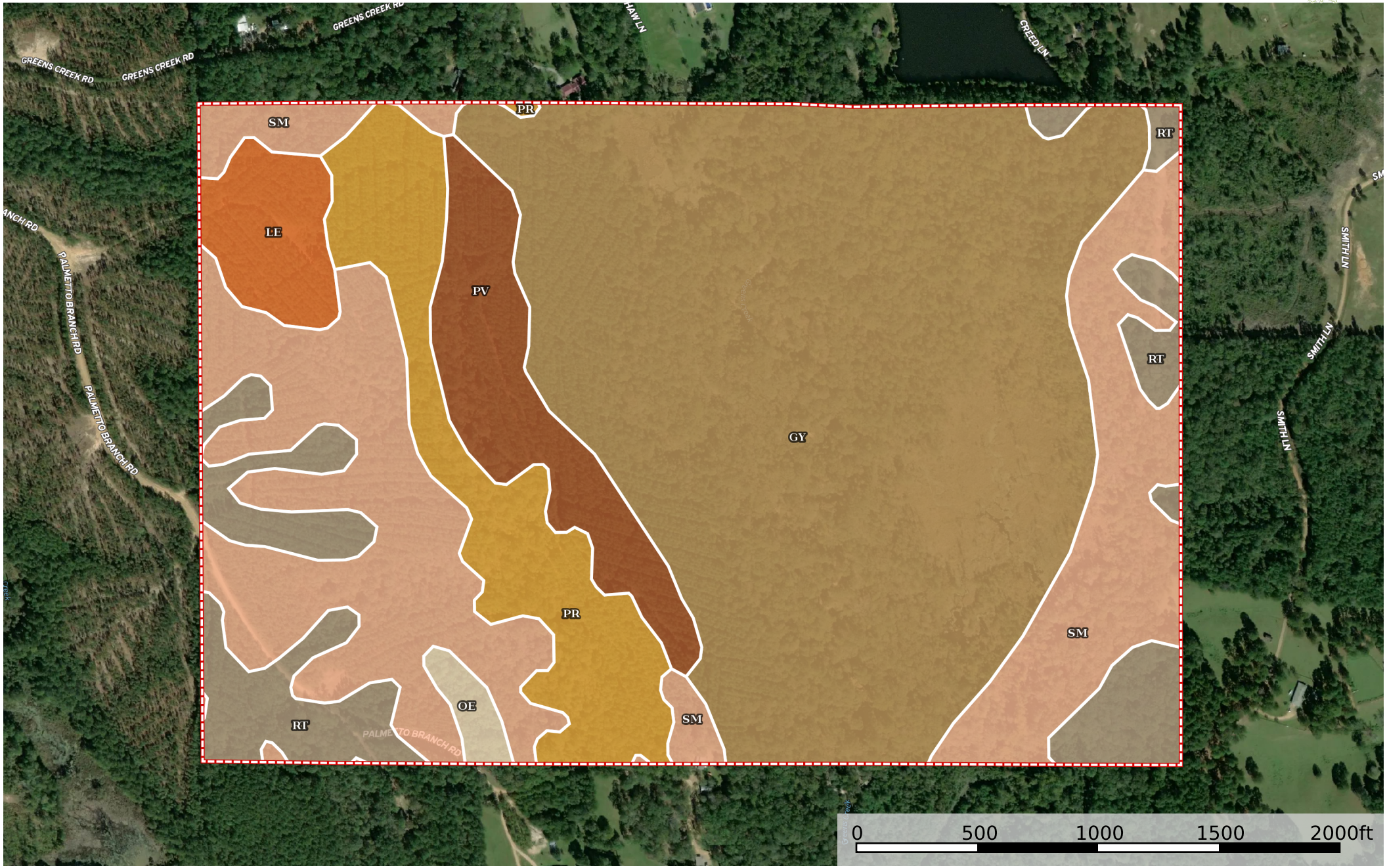


Greens Creek Lake Tract

La Salle Parish, Louisiana, 233.3 AC +/-



 Boundary

|  Boundary 253.77 ac

SOIL CODE	SOIL DESCRIPTION	ACRES	%	CPI	NCCPI	CAP
GY	Guyton and Ouachita soils, frequently flooded	122.32	48.2	0	40	5w
Sm	Smithdale fine sandy loam, 12 to 30 percent slopes	60.09	23.68	0	47	7e
Pr	Providence silt loam, 1 to 3 percent slopes	23.54	9.28	0	66	2e
Rt	Ruston fine sandy loam, 3 to 8 percent slopes	22.16	8.73	0	70	3e
Pv	Providence silt loam, 3 to 8 percent slopes	15.9	6.27	0	64	3e
Le	Lexington silt loam, 1 to 3 percent slopes	7.78	3.07	0	75	2e
OE	Ouachita and jena soils, frequently flooded	1.98	0.78	0	60	4w
TOTALS		253.75(*)	100%	-	49.43	4.8









(*) Total acres may differ in the second decimal compared to the sum of each acreage soil. This is due to a round error because we only show the acres of each soil with two decimal.

Capability Legend

Increased Limitations and Hazards

Decreased Adaptability and Freedom of Choice Users

Land, Capability

								
	1	2	3	4	5	6	7	8
'Wild Life'	•	•	•	•	•	•	•	•
Forestry	•	•	•	•	•	•	•	
Limited	•	•	•	•	•	•	•	
Moderate	•	•	•	•	•	•		
Intense	•	•	•	•	•			
Limited	•	•	•	•				
Moderate	•	•	•					
Intense	•	•						
Very Intense	•							

Grazing Cultivation

(c) climatic limitations (e) susceptibility to erosion

(s) soil limitations within the rooting zone (w) excess of water