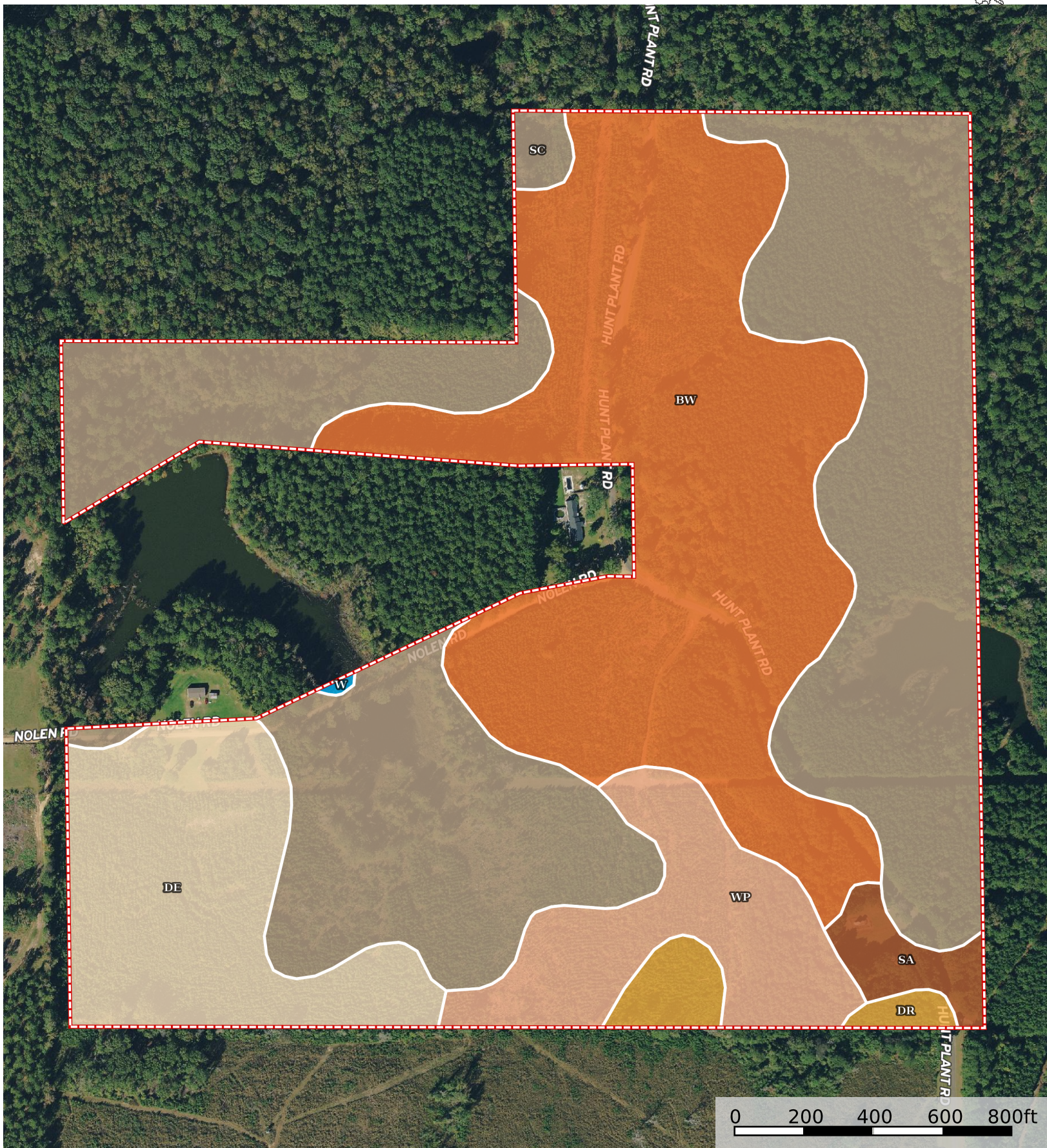


House Place - J.S. Nolen Estate

Claiborne Parish, Louisiana, 115.1 AC +/-



Boundary



Boundary 117.96 ac

SOIL CODE	SOIL DESCRIPTION	ACRES	%	CPI	NCCPI	CAP
Sc	Sacul very fine sandy loam, 5 to 12 percent slopes	52.11	44.18	0	76	6e
Bw	Bowie fine sandy loam, 1 to 5 percent slopes	38.14	32.33	0	80	3e
De	Darley gravelly loamy fine sand, 1 to 5 percent slopes	13.99	11.86	0	69	3e
Wp	Wolfpen loamy sand, 1 to 3 percent slopes	9.38	7.95	0	70	3s
Dr	Darley gravelly fine sandy loam, 5 to 12 percent slopes	2.14	1.81	0	51	6e
Sa	Sacul very fine sandy loam, 1 to 5 percent slopes	2.12	1.8	0	79	4e
W	Water	0.08	0.07	0	-	-
TOTALS		117.96(*)	100%	-	75.53	4.4

(*) Total acres may differ in the second decimal compared to the sum of each acreage soil. This is due to a round error because we only show the acres of each soil with two decimal.

