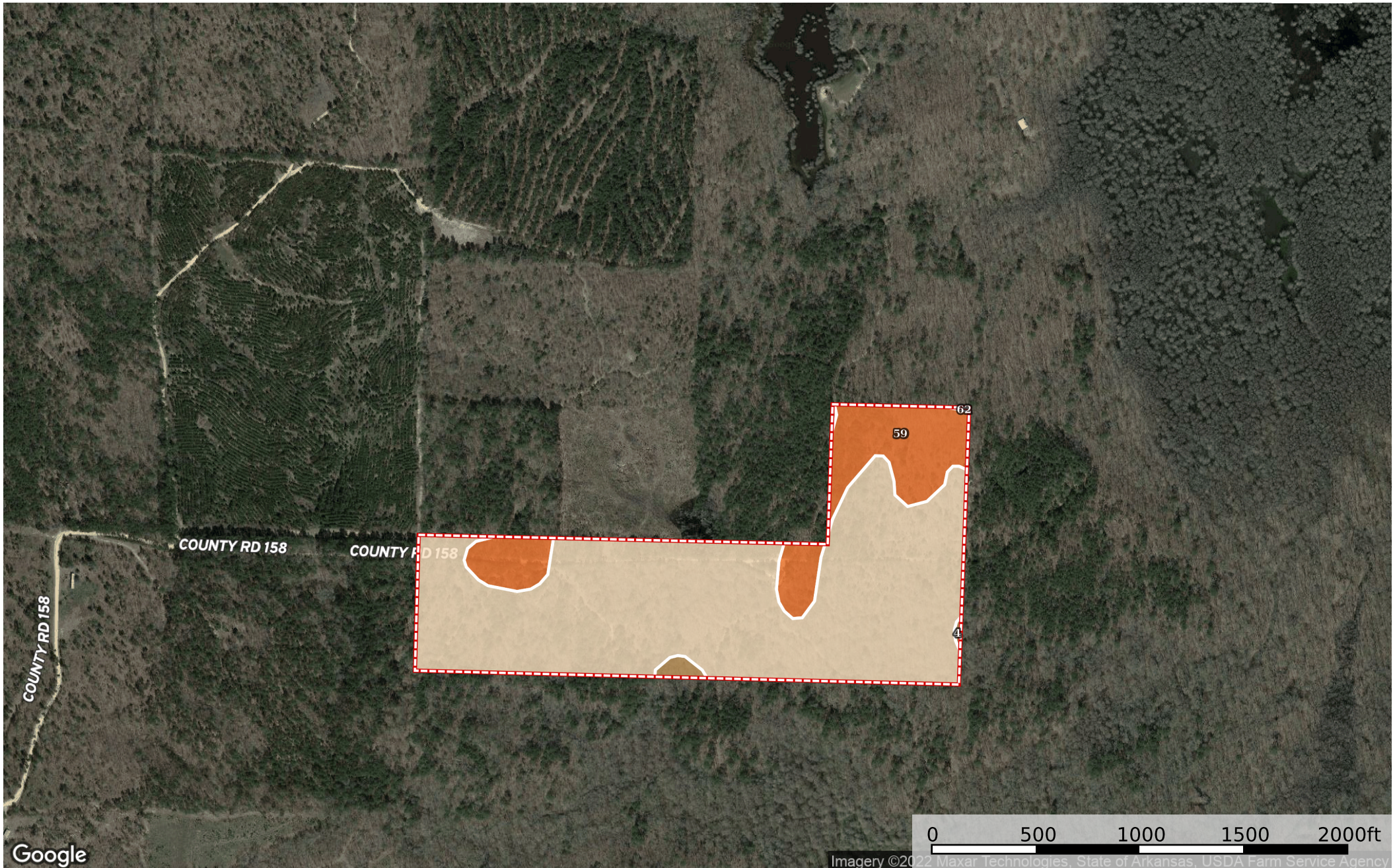


Sulfur River WMA 50

Arkansas, AC +/-




Google

Imagery ©2022 Maxar Technologies, State of Arkansas, USDA Farm Service Agency

 Boundary

Drake Butler

 The information contained herein was obtained from sources deemed to be reliable. MapRight Services makes no warranties or guarantees as to the completeness or accuracy thereof.

|  Boundary 49.16 ac

SOIL CODE	SOIL DESCRIPTION	ACRES	%	CPI	NCCPI	CAP
62	Sacul fine sandy loam, 20 to 40 percent slopes	39.6	80.54	0	17	7e
59	Sacul fine sandy loam, 3 to 8 percent slopes	9.07	18.45	0	76	4e
4	Amy silt loam, 0 to 1 percent slopes, frequently flooded	0.49	1.0	0	40	5w
TOTALS		49.17(*)	100%	-	28.11	6.43

(*) Total acres may differ in the second decimal compared to the sum of each acreage soil. This is due to a round error because we only show the acres of each soil with two decimal.

