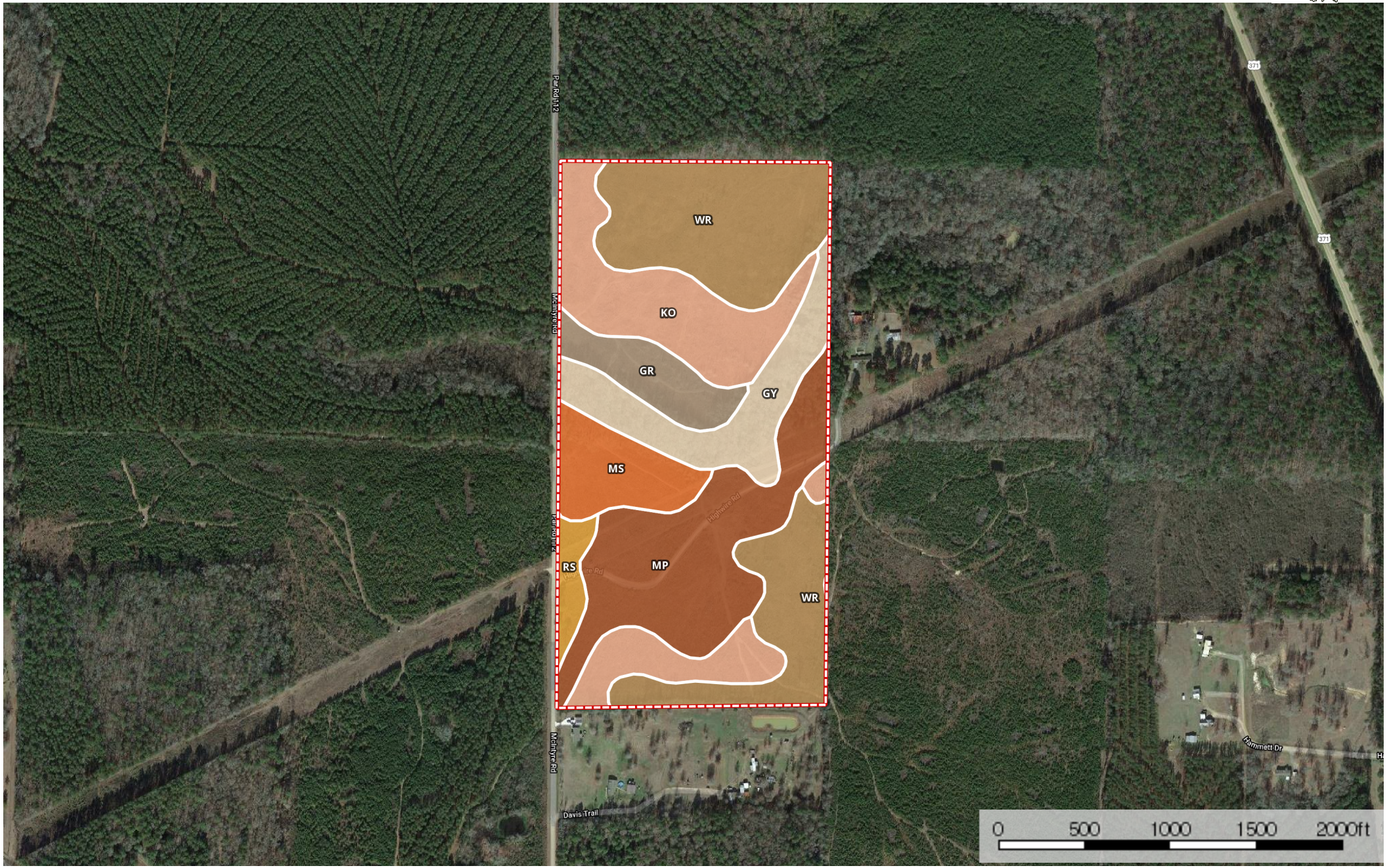


McIntyre Road at Dixie Inn

Webster Parish, Louisiana, 80 AC +/-



Boundary

|  Boundary 80.8 ac

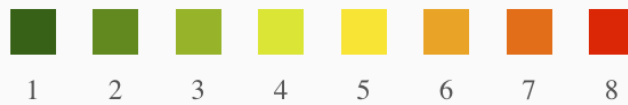
SOIL CODE	SOIL DESCRIPTION	ACRES	%	CAP
Wr	Wrightsville silt loam, 0 to 1 percent slopes, rarely flooded	24.1	29.86	3w
Ms	Malbis fine sandy loam, 3 to 8 percent slopes	5.9	7.35	3e
GY	Guyton-Ouachita silt loams, frequently flooded	9.0	11.11	5w
Rs	Ruston fine sandy loam, 1 to 3 percent slopes	2.0	2.47	2e
Mp	Malbis fine sandy loam, 1 to 3 percent slopes	17.4	21.6	2e
GR	Gore silt loam, 5 to 12 percent slopes	5.1	6.26	6e
Ko	Kolin silt loam, 1 to 3 percent slopes	17.2	21.35	2e
TOTALS		80.8	100%	2.96

Capability Legend

Increased Limitations and Hazards

Decreased Adaptability and Freedom of Choice Users

Land, Capability



'Wild Life'	•	•	•	•	•	•	•	•
Forestry	•	•	•	•	•	•	•	
Limited	•	•	•	•	•	•	•	
Moderate	•	•	•	•	•	•		
Intense	•	•	•	•	•			
Limited	•	•	•	•				
Moderate	•	•	•					
Intense	•	•						
Very Intense	•							

Grazing Cultivation

(c) climatic limitations (e) susceptibility to erosion

(s) soil limitations within the rooting zone (w) excess of water