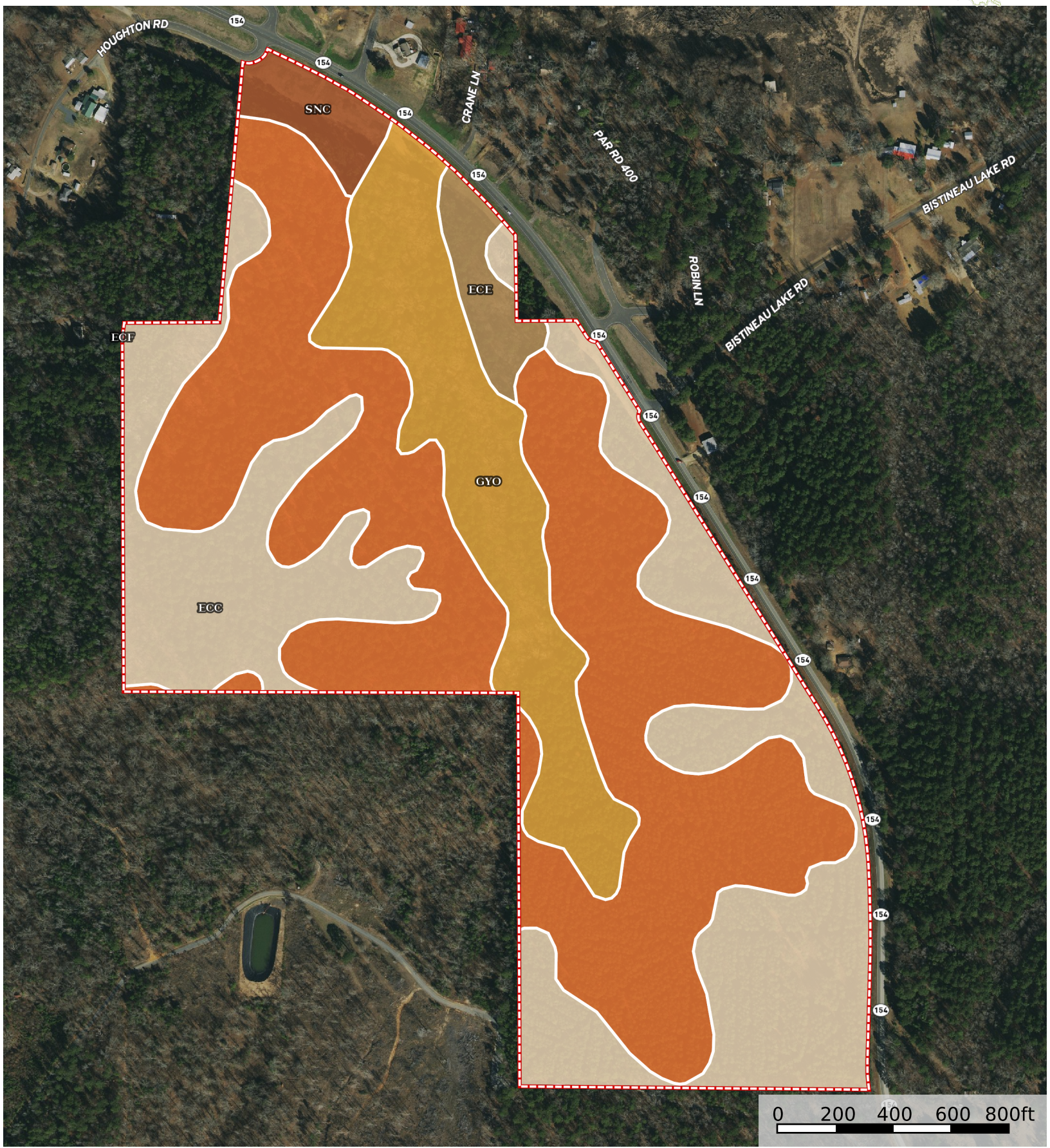


# Bistineau Overlook

Bienville Parish, Louisiana, 110 AC +/-



Boundary



Boundary 110.34 ac

SOIL CODE	SOIL DESCRIPTION	ACRES	%	NCCPI	CAP
ECF	Eastwood fine sandy loam, 12 to 20 percent slopes	51.29	46.48	42	6e
EcC	Eastwood fine sandy loam, 1 to 5 percent slopes	35.71	32.36	50	4e
GYO	Guyton-Ouachita silt loams, 0 to 1 percent slopes, frequently flooded	17.55	15.91	50	5w
ECE	Eastwood fine sandy loam, 5 to 12 percent slopes	2.92	2.65	60	6e
SnC	Sawyer very fine sandy loam, 1 to 5 percent slopes	2.87	2.6	63	3e
TOTALS		110.34(*)	100%	46.88	5.12

(\*) Total acres may differ in the second decimal compared to the sum of each acreage soil. This is due to a round error because we only show the acres of each soil with two decimal.

