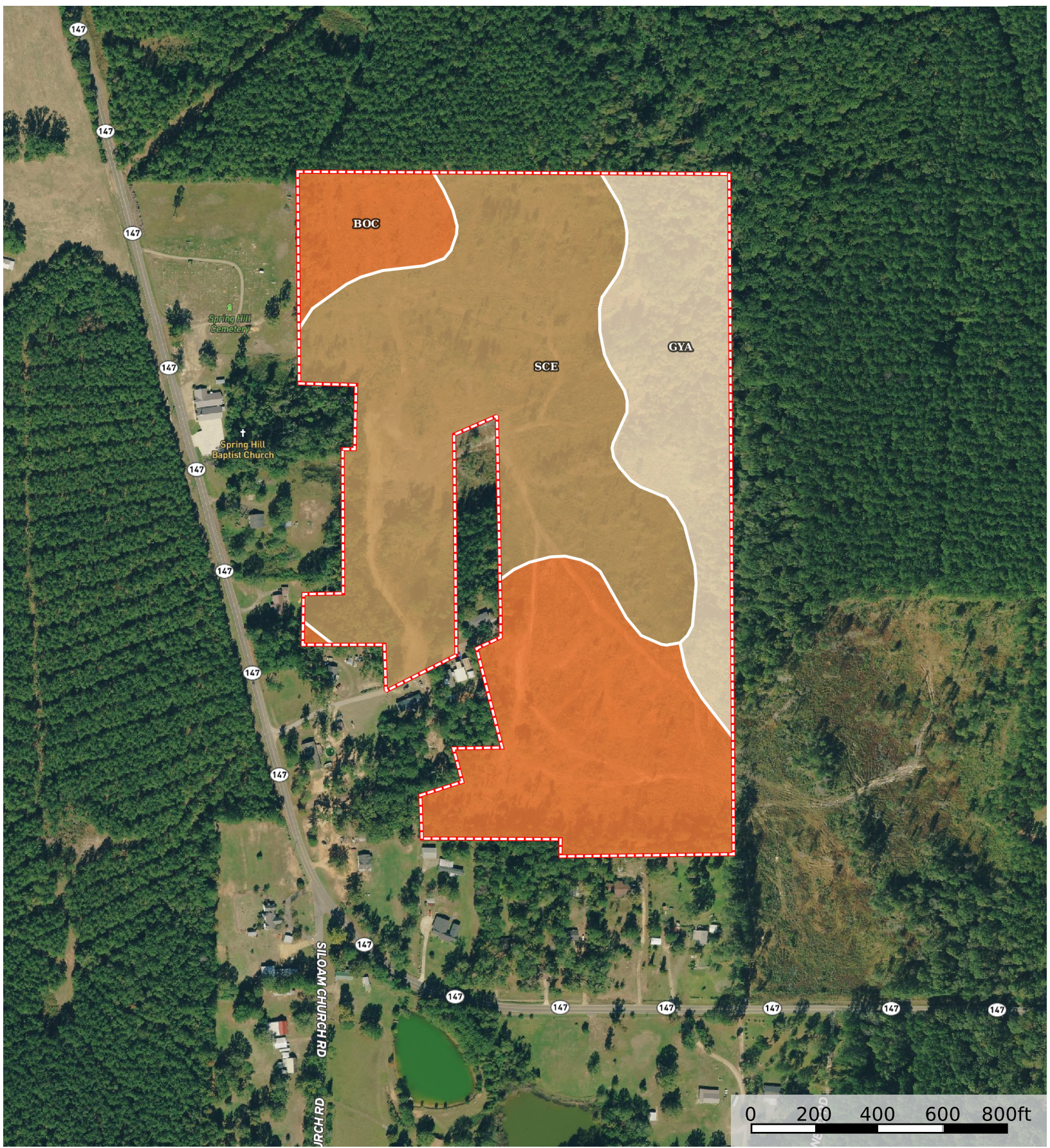


Folden Springhill Tract

Jackson Parish, Louisiana, 55 AC +/-



 Boundary

|  Boundary 54.25 ac

SOIL CODE	SOIL DESCRIPTION	ACRES	%	CPI	NCCPI	CAP
SCE	Sacul fine sandy loam, 5 to 20 percent slopes	26.21	48.31	0	77	6e
BoC	Bowie fine sandy loam, 1 to 5 percent slopes	17.68	32.59	0	80	3e
GYA	Guyton-Ouachita-Ochlockonee association, frequently flooded	10.36	19.1	0	47	5w
TOTALS		54.25(*)	100%	-	72.25	4.83

(*) Total acres may differ in the second decimal compared to the sum of each acreage soil. This is due to a round error because we only show the acres of each soil with two decimal.

