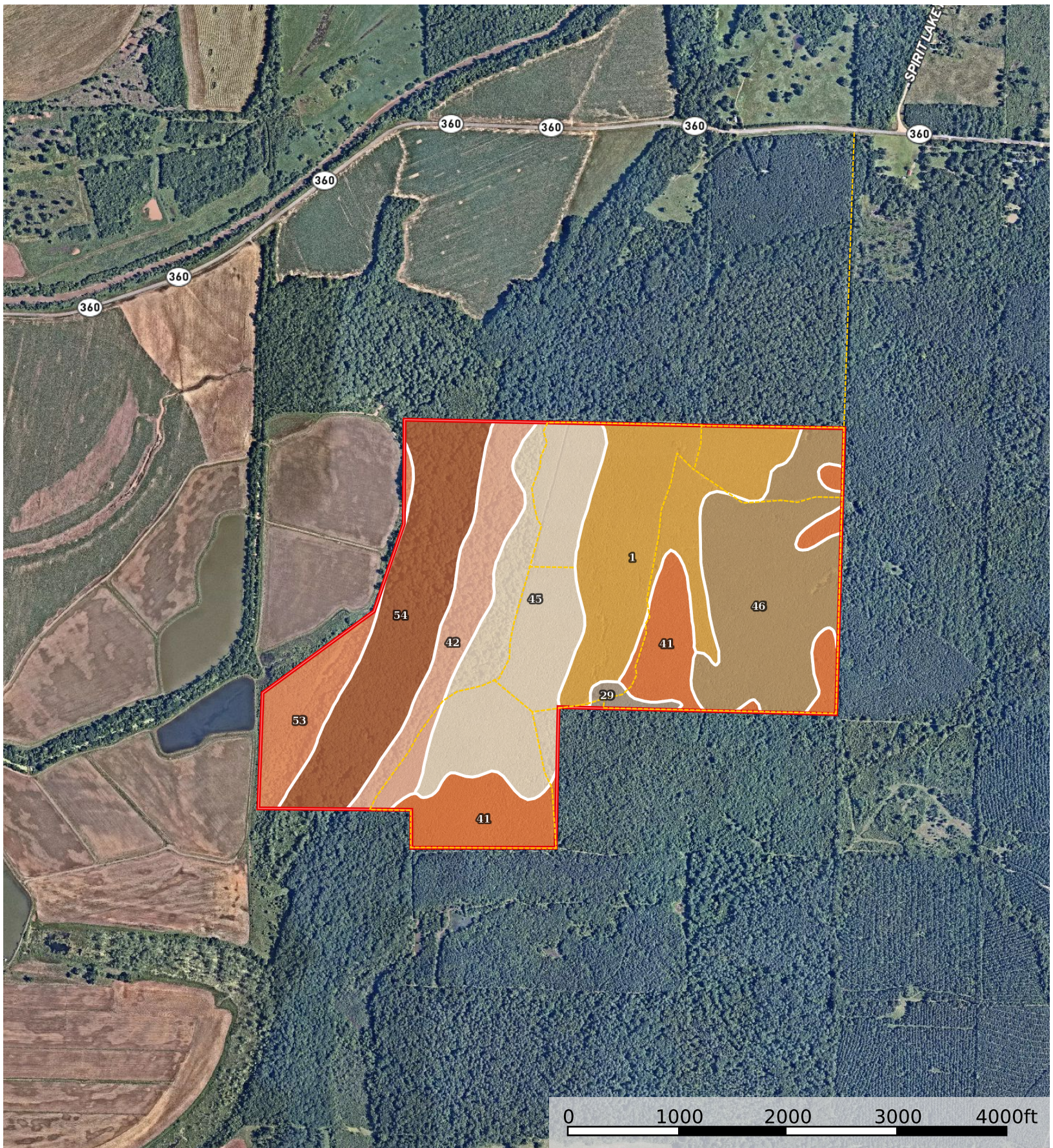


Prehistoric Paradise

Arkansas, 330 AC +/-



--- Road / Trail □ Boundary

Boundary 327.15 ac

SOIL CODE	SOIL DESCRIPTION	ACRES	%	CPI	NCCPI	CAP
45	Muskogee silt loam, 1 to 3 percent slopes	67.14	20.52	0	72	2e
1	Dorcheat silt loam, 0 to 2 percent slopes	59.6	18.22	0	63	3w
46	Muskogee silt loam, 3 to 8 percent slopes	57.32	17.52	0	71	3e
54	Bossier clay, 0 to 1 percent slopes, frequently flooded	53.9	16.48	0	26	5w
41	McKamie silt loam, 2 to 5 percent slopes	39.07	11.94	0	65	4e
42	McKamie silt loam, 5 to 20 percent slopes	28.38	8.67	0	61	6e
53	Bossier clay, 0 to 1 percent slopes	19.08	5.83	0	41	3w
29	Guyton silt loam, 0 to 1 percent slopes, frequently flooded	2.66	0.81	0	49	5w
TOTALS		327.15(*)	100%	-	58.82	3.52

(*) Total acres may differ in the second decimal compared to the sum of each acreage soil. This is due to a round error because we only show the acres of each soil with two decimal.

