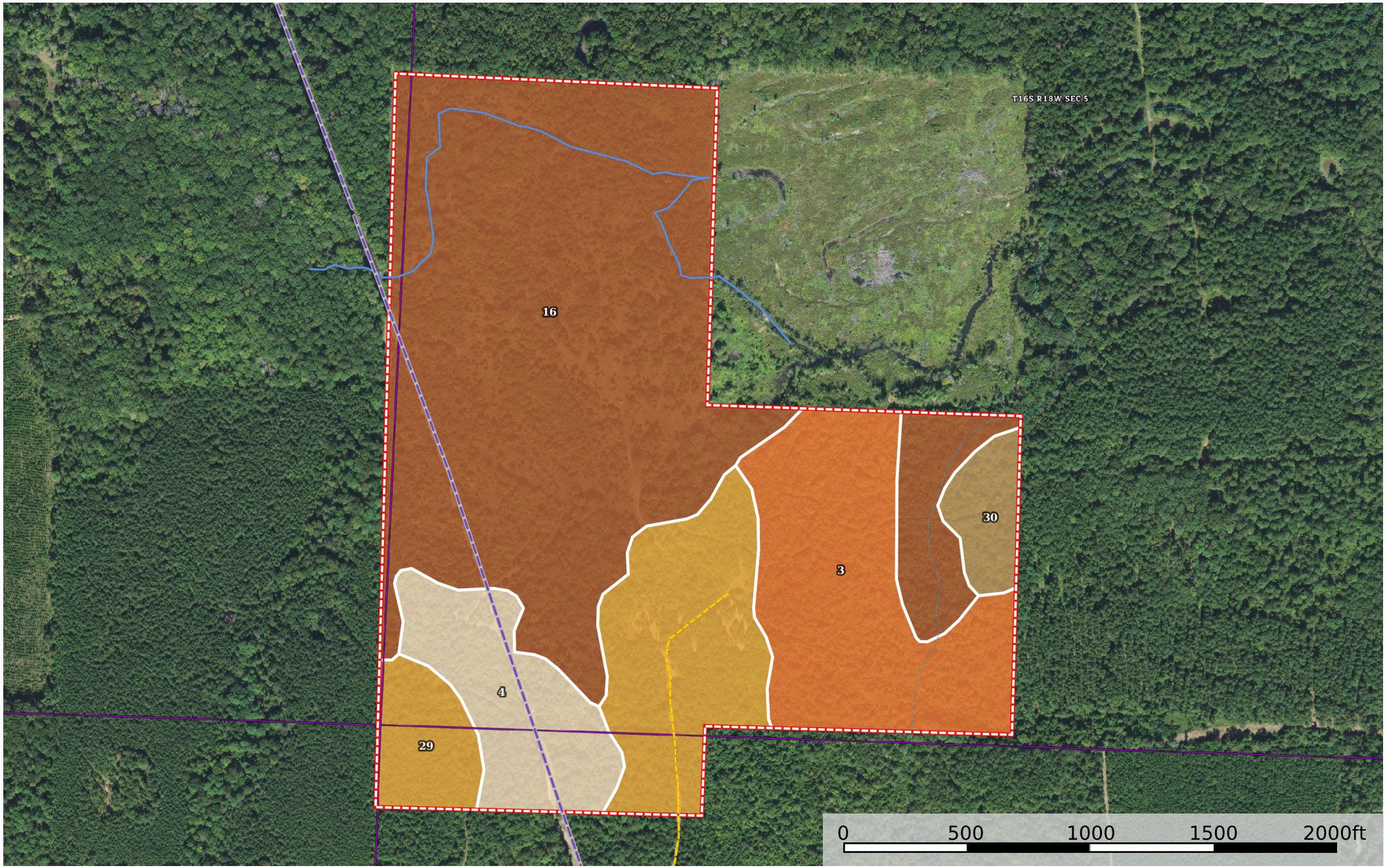


Medlock 130

Arkansas, 130 AC +/-



T16S R13W SEC 5

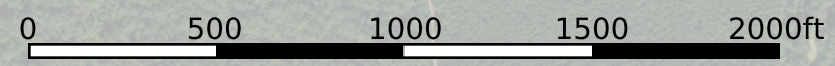
16

3

30

4

29



- Pipeline
- Primary Road
- Road / Trail
- River / Creek
- Boundary
- Stream, Intermittent
- River/Creek
- Water Body

|  Boundary 126.11 ac

SOIL CODE	SOIL DESCRIPTION	ACRES	%	CPI	NCCPI	CAP
16	Guyton silt loam, 0 to 1 percent slopes, frequently flooded	69.62	55.21	0	48	5w
3	Angie fine sandy loam, 1 to 3 percent slopes	21.58	17.11	0	80	2e
29	Warnock fine sandy loam, 1 to 3 percent slopes	20.41	16.18	0	70	2e
4	Angie fine sandy loam, 3 to 8 percent slopes	10.96	8.69	0	81	3e
30	Warnock fine sandy loam, 3 to 8 percent slopes	3.54	2.81	0	69	3e
TOTALS		126.1 1(*)	100%	-	60.49	3.77

(*) Total acres may differ in the second decimal compared to the sum of each acreage soil. This is due to a round error because we only show the acres of each soil with two decimal.

Capability Legend

Increased Limitations and Hazards

Decreased Adaptability and Freedom of Choice Users

Land, Capability

	1	2	3	4	5	6	7	8
'Wild Life'	•	•	•	•	•	•	•	•
Forestry	•	•	•	•	•	•	•	
Limited	•	•	•	•	•	•	•	
Moderate	•	•	•	•	•	•		
Intense	•	•	•	•	•			
Limited	•	•	•	•				
Moderate	•	•	•					
Intense	•	•						
Very Intense	•							

Grazing Cultivation

(c) climatic limitations (e) susceptibility to erosion

(s) soil limitations within the rooting zone (w) excess of water