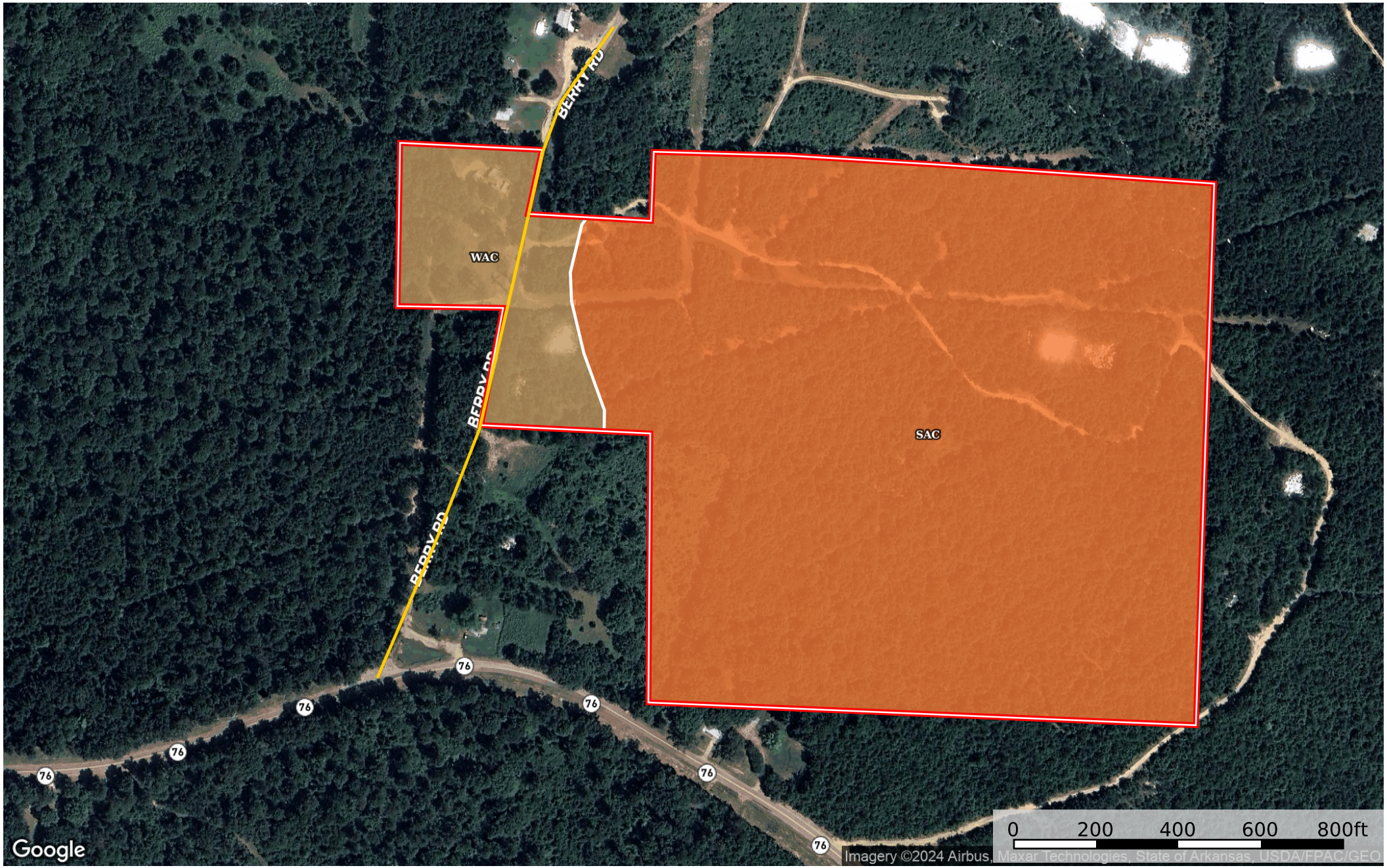


Johnson Hunt Club

Nevada County, Arkansas, 46.88 AC +/-



Primary Road Boundary

|  Boundary 47.86 ac

SOIL CODE	SOIL DESCRIPTION	ACRES	%	CPI	NCCPI	CAP
SaC	Sacul fine sandy loam, 3 to 8 percent slopes	42.83	89.49	0	76	4e
WaC	Warnock fine sandy loam, 1 to 7 percent slopes	5.03	10.51	0	78	3e
TOTALS		47.86(*)	100%	-	76.21	3.89

(*) Total acres may differ in the second decimal compared to the sum of each acreage soil. This is due to a round error because we only show the acres of each soil with two decimal.

