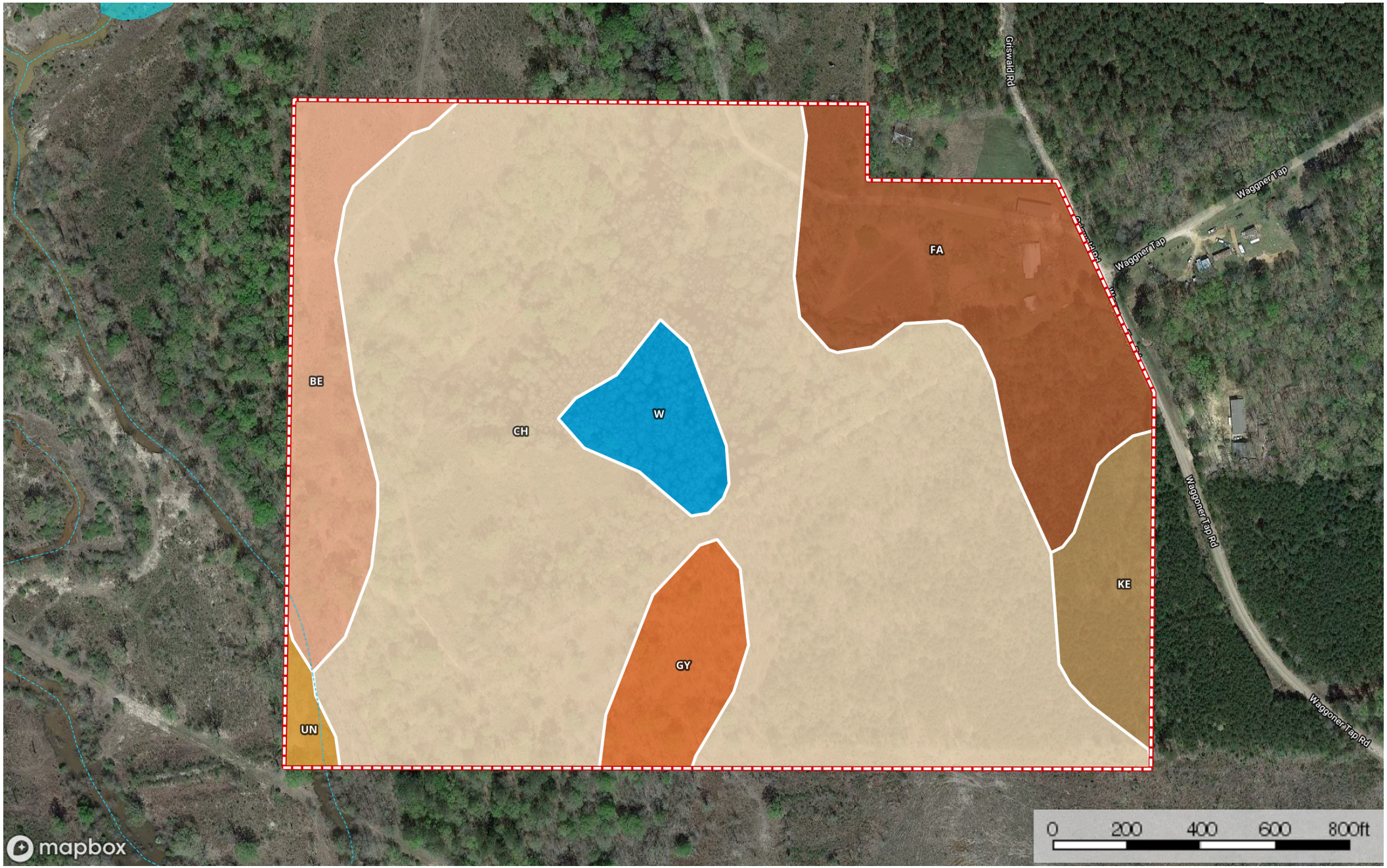


Griswald Road Tract

La Salle Parish, Louisiana, 67 AC +/-



- Boundary
- Stream, Intermittent
- River/Creek
- Water Body

|  65.5 ac

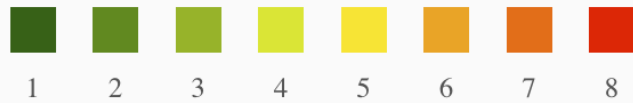
SOIL CODE	SOIL DESCRIPTION	ACRES	%	CAP
Ke	Keithville very fine sandy loam, 1 to 5 percent slopes	2.8	4.23	3e
GY	Guyton and Ouachita soils, frequently flooded	2.6	4.02	5w
Ch	Cahaba fine sandy loam, 1 to 3 percent slopes	43.6	66.63	2e
Un	Una silty clay loam, frequently flooded	0.6	0.86	4w
Fa	Falkner silt loam	8.8	13.47	2w
W	Water	2.1	3.27	-
Be	Bienville loamy fine sand, 1 to 3 percent slopes	4.9	7.53	2s
TOTALS		65.5	100%	2.11

Capability Legend

Increased Limitations and Hazards

Decreased Adaptability and Freedom of Choice Users

Land, Capability



	1	2	3	4	5	6	7	8
'Wild Life'	•	•	•	•	•	•	•	•
Forestry	•	•	•	•	•	•	•	
Limited	•	•	•	•	•	•	•	
Moderate	•	•	•	•	•	•		
Intense	•	•	•	•	•			
Limited	•	•	•	•				
Moderate	•	•	•					
Intense	•	•						
Very Intense	•							

Grazing Cultivation

(c) climatic limitations (e) susceptibility to erosion

(s) soil limitations within the rooting zone (w) excess of water