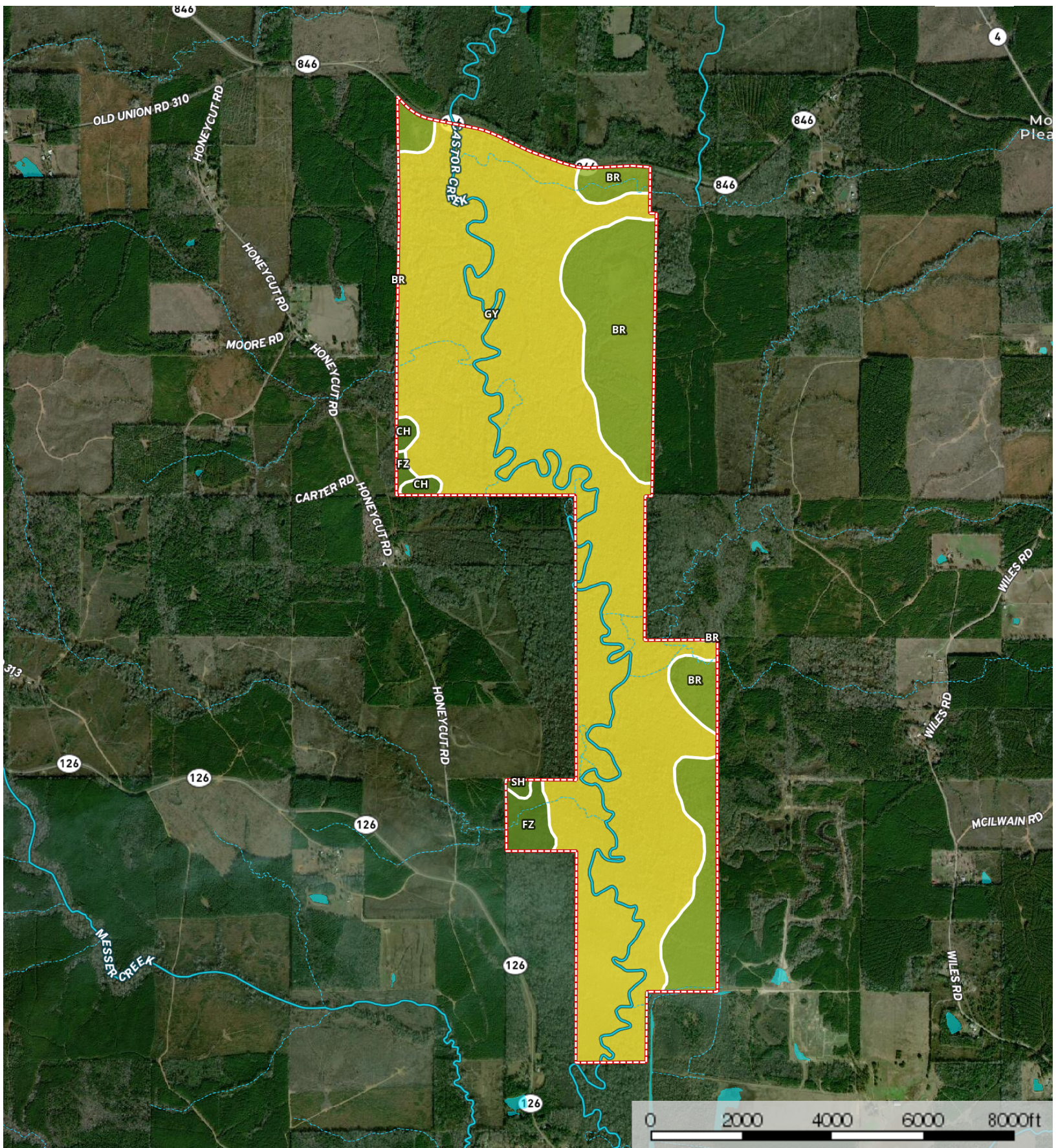


Castor Creek 1250

Caldwell Parish, Louisiana, 1250 AC +/-



Boundary 1287.9 ac

SOIL CODE	SOIL DESCRIPTION	ACRES	%	CAP
BR	Brimstone-Prentiss association, 0 to 3 percent slopes	258.3	20.06	3s
FZ	Frizzell-Guyton-Providence association, 0 to 2 percent slopes	25.5	1.98	2e
Ch	Cahaba fine sandy loam, 1 to 3 percent slopes	9.9	0.77	2e
SH	Savannah-sacul association, gently sloping	3.0	0.23	2e
GY	Guyton and Ouachita silt loams, frequently flooded	991.1	76.96	5w
TOTALS		1287.9	100%	4.51

Capability Legend

Increased Limitations and Hazards

Decreased Adaptability and Freedom of Choice Users

Land, Capability

	1	2	3	4	5	6	7	8
'Wild Life'	•	•	•	•	•	•	•	•
Forestry	•	•	•	•	•	•	•	
Limited	•	•	•	•	•	•	•	
Moderate	•	•	•	•	•	•		
Intense	•	•	•	•	•			
Limited	•	•	•	•				
Moderate	•	•	•					
Intense	•	•						
Very Intense	•							

Grazing Cultivation

(c) climatic limitations (e) susceptibility to erosion

(s) soil limitations within the rooting zone (w) excess of water