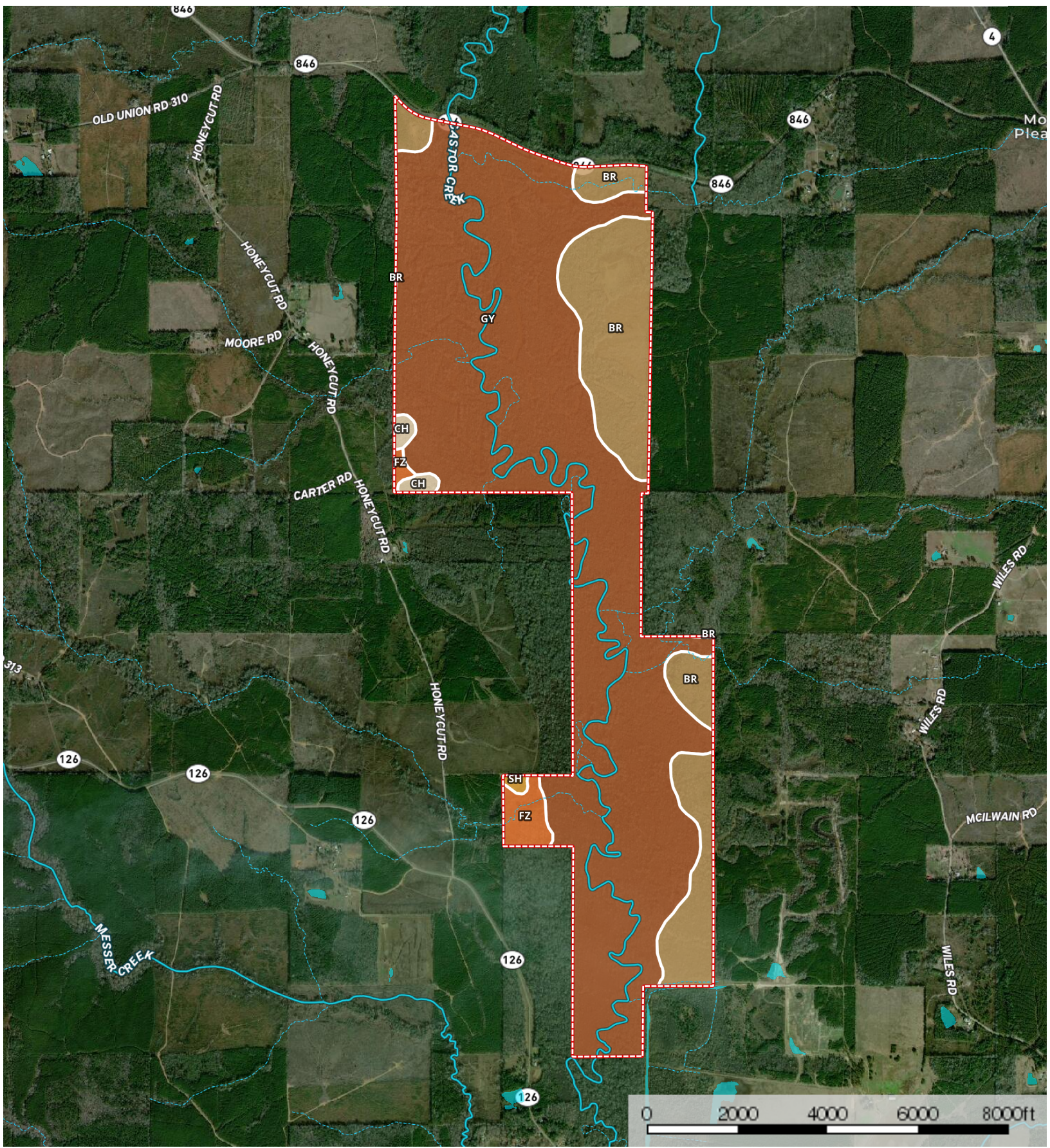


Castor Creek 1250

Caldwell Parish, Louisiana, 1250 AC +/-



Boundary 1287.9 ac

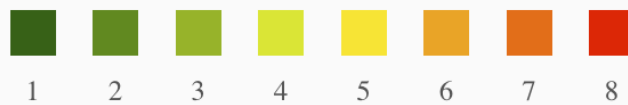
SOIL CODE	SOIL DESCRIPTION	ACRES	%	CAP
BR	Brimstone-Prentiss association, 0 to 3 percent slopes	258.3	20.06	3s
FZ	Frizzell-Guyton-Providence association, 0 to 2 percent slopes	25.5	1.98	2e
Ch	Cahaba fine sandy loam, 1 to 3 percent slopes	9.9	0.77	2e
SH	Savannah-sacul association, gently sloping	3.0	0.23	2e
GY	Guyton and Ouachita silt loams, frequently flooded	991.1	76.96	5w
TOTALS		1287.9	100%	4.51

Capability Legend

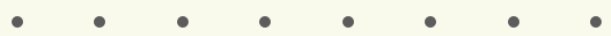
Increased Limitations and Hazards

Decreased Adaptability and Freedom of Choice Users

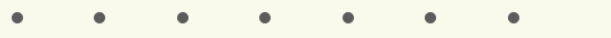
Land, Capability



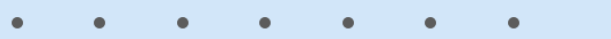
'Wild Life'



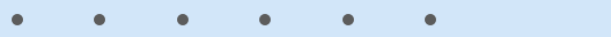
Forestry



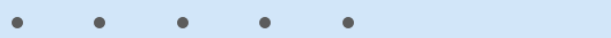
Limited



Moderate



Intense



Limited



Moderate



Intense



Very Intense



Grazing Cultivation

(c) climatic limitations (e) susceptibility to erosion

(s) soil limitations within the rooting zone (w) excess of water