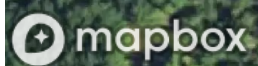
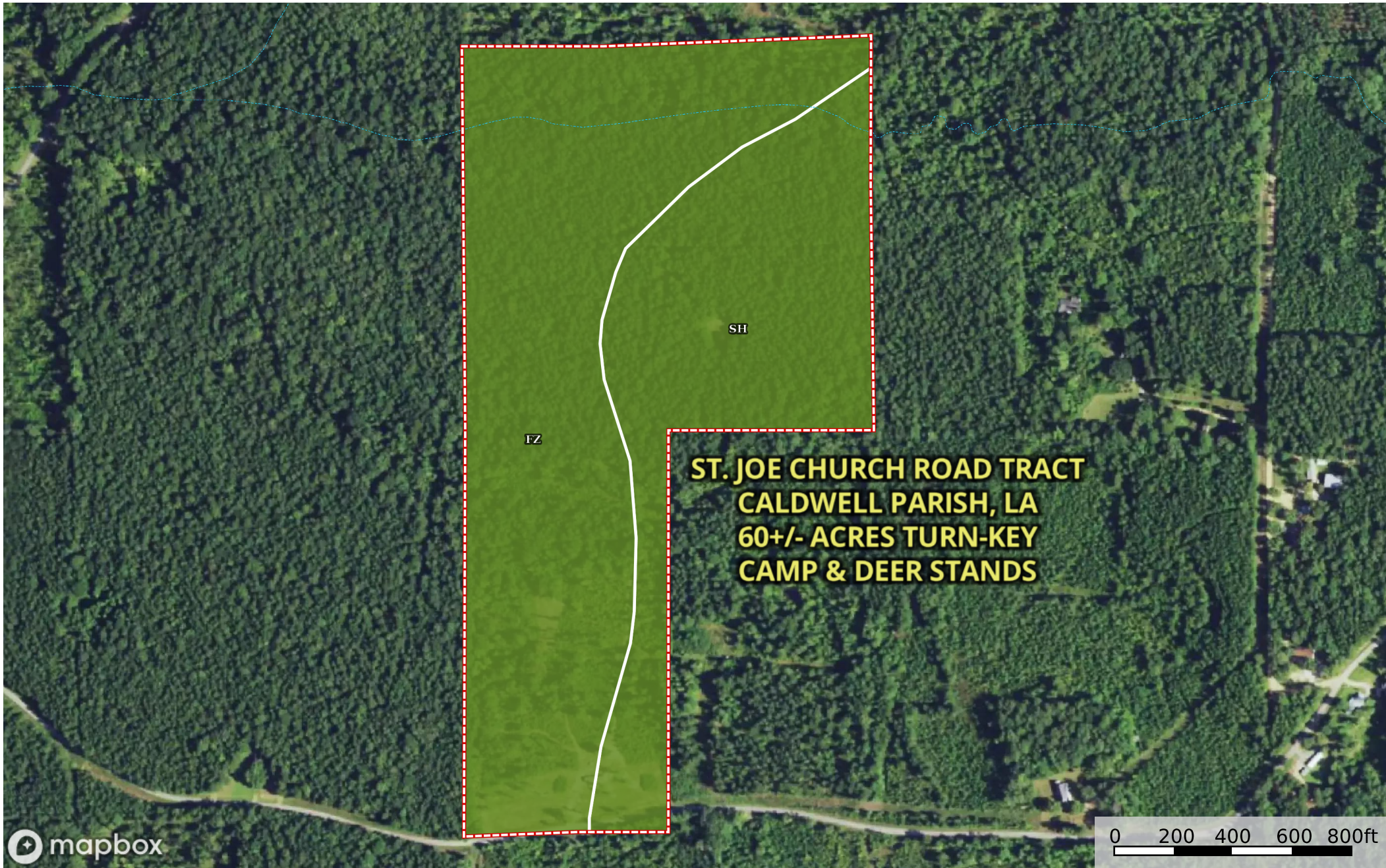


St. Joe Church Road Tract of Caldwell Parish

Caldwell Parish, Louisiana, 60 AC +/-



- Boundary
- Stream, Intermittent
- River/Creek
- Water Body

|  Boundary 62.51 ac

SOIL CODE	SOIL DESCRIPTION	ACRES	%	CPI	NCCPI	CAP
FZ	Frizzell-Guyton-Providence association, 0 to 2 percent slopes	38.71	61.93	0	73	2e
SH	Savannah-sacul association, gently sloping	23.8	38.07	0	62	2e
TOTALS		62.51(*)	100%	-	68.81	2.0

(*) Total acres may differ in the second decimal compared to the sum of each acreage soil. This is due to a round error because we only show the acres of each soil with two decimal.

Capability Legend

Increased Limitations and Hazards

Decreased Adaptability and Freedom of Choice Users

Land, Capability	1	2	3	4	5	6	7	8
'Wild Life'	•	•	•	•	•	•	•	•
Forestry	•	•	•	•	•	•	•	
Limited	•	•	•	•	•	•	•	
Moderate	•	•	•	•	•	•		
Intense	•	•	•	•	•			
Limited	•	•	•	•				
Moderate	•	•	•					
Intense	•	•						
Very Intense	•							

Grazing Cultivation

- (c) climatic limitations (e) susceptibility to erosion
- (s) soil limitations within the rooting zone (w) excess of water