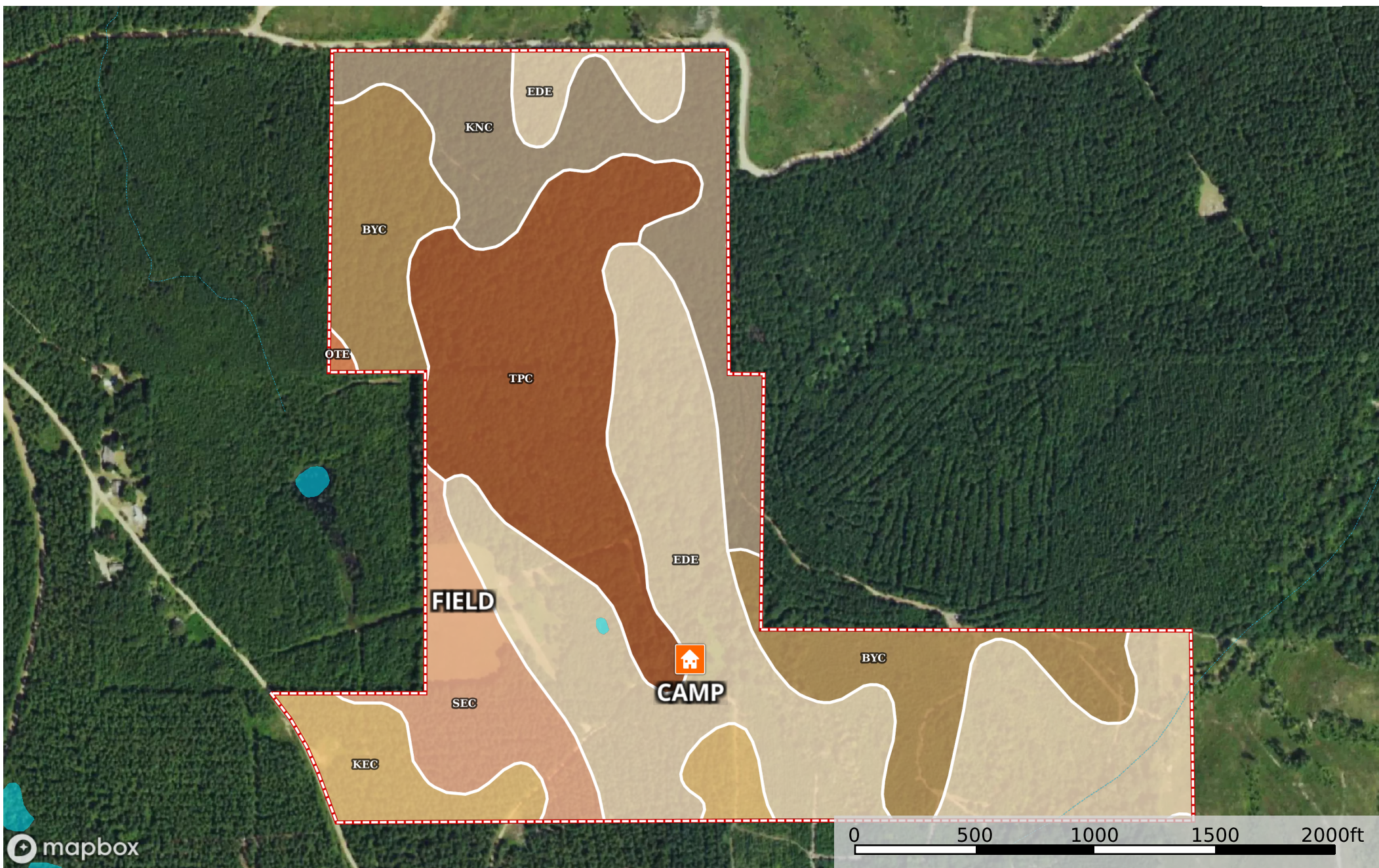


# Briggs Lane Tract

Sabine Parish, Louisiana, 145.35 AC +/-



mapbox

- House
- Boundary
- Stream, Intermittent
- River/Creek
- Water Body

|  Boundary 149.29 ac

SOIL CODE	SOIL DESCRIPTION	ACRES	%	CPI	NCCPI	CAP
EDE	Eastwood fine sandy loam, 5 to 12 percent slopes	54.38	36.43	0	60	6e
TpC	Trep loamy fine sand, 1 to 5 percent slopes	29.27	19.61	0	55	4e
ByC	Briley loamy fine sand, 1 to 5 percent slopes	22.58	15.13	0	56	3e
KnC	Kirvin fine sandy loam, 1 to 5 percent slopes	21.09	14.13	0	71	3e
SeC	Saucier fine sandy loam, 1 to 5 percent slopes	12.03	8.06	0	67	2e
KeC	Keithville very fine sandy loam, 1 to 5 percent slopes	9.56	6.4	0	71	3e
OTE	Oktibbeha loam, 5 to 12 percent slopes	0.32	0.21	0	58	6e
EdC	Eastwood fine sandy loam, 1 to 5 percent slopes	0.06	0.04	0	60	4e
TOTALS		149.29(*)	100%	-	61.24	4.22

(\*) Total acres may differ in the second decimal compared to the sum of each acreage soil. This is due to a round error because we only show the acres of each soil with two decimal.

