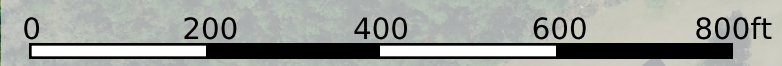
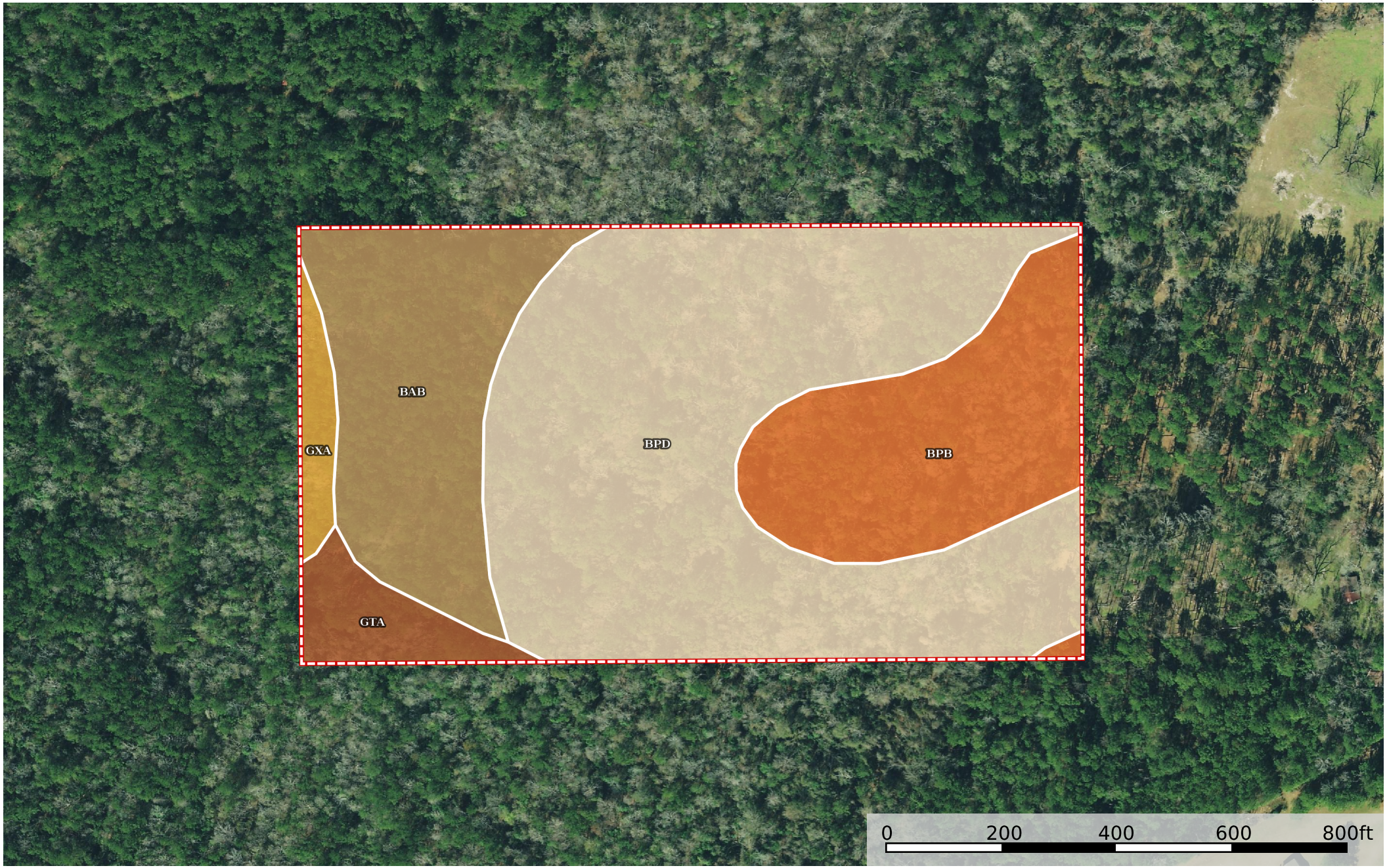


HWY 389 Tract, Beauregard Parish, 20 +/- Acres

Beauregard Parish, Louisiana, 20 AC +/-



 Boundary

|  Boundary 23.49 ac

SOIL CODE	SOIL DESCRIPTION	ACRES	%	CPI	NCCPI	CAP
BpD	Blevins very fine sandy loam, 5 to 8 percent slopes	12.74	54.26	0	83	3e
BaB	Bearhead-Merryville complex, gently undulating	4.56	19.42	0	72	2e
BpB	Blevins very fine sandy loam, 1 to 3 percent slopes	4.54	19.34	0	85	2e
GtA	Guyton silt loam, 0 to 1 percent slopes, occasionally flooded	1.06	4.51	0	61	4w
GXA	Guyton-lulus complex, 0 to 1 percent slopes, frequently flooded	0.59	2.51	0	49	5w
TOTALS		23.49(*)	100%	-	79.44	2.71

(*) Total acres may differ in the second decimal compared to the sum of each acreage soil. This is due to a round error because we only show the acres of each soil with two decimal.

Capability Legend

Increased Limitations and Hazards

Decreased Adaptability and Freedom of Choice Users

Land, Capability

	1	2	3	4	5	6	7	8
'Wild Life'	•	•	•	•	•	•	•	•
Forestry	•	•	•	•	•	•	•	
Limited	•	•	•	•	•	•	•	
Moderate	•	•	•	•	•	•		
Intense	•	•	•	•	•			
Limited	•	•	•	•				
Moderate	•	•	•					
Intense	•	•						
Very Intense	•							

Grazing Cultivation

(c) climatic limitations (e) susceptibility to erosion

(s) soil limitations within the rooting zone (w) excess of water